

# Presbyterian Welcome

## 2010 Annual Report



### Table of Contents

Presbyterian Welcome Events and Projects	2
Evangelism and Outreach	3
Publications and Media	4
Financial Development	4
Financial Report	5
Personnel	6
Organizational Chart	6
Donors	7
Vision and Mission	8
Member Congregations	8

### Dear Friends,

As I reflect on the past year, the old idiom, "You can't see the trees for the forest" comes to mind. We've actually built quite a "forest" this year, tree by tree by tree. The many "trees" we have planted this year will continue to bloom and grow in 2011. Our days have been full with worshipping together, raising funds, hosting parties, relocating our offices, organizing and supporting GLBTQ inquirers and candidates and being available for pastoral care.

I have written and preached many a sermon, encouraged new congregations to join our midst (welcome Watchung Avenue Presbyterian Church!), integrated ourselves into the lives of places such as the New York City Presbytery and Union Theological Seminary, plus continued the ongoing task of prompting changes to our Constitution. At the end of the year, all of these activities add up to a great forest that will support the plans and principles inspired in us by the Holy Spirit.

One of my most fulfilling responsibilities is the opportunity to be with those who

need listening ears, a sympathetic voice and a warm embrace. My outreach on behalf of Presbyterian Welcome includes being present in as many ways as is possible for every individual person who needs help in their process towards ordination, or assurance as they struggle with "coming out."

I think all of the people who support us realize how working together helps us to overcome our challenges and make the experience more satisfying. Indeed, I am grateful for all of you who read this report and who will not even set eyes on it, yet have crossed our path this past year.

While this country's financial reality has impacted us hard, we were able to end the year with no financial debt because of careful planning in previous years. We hope for a more robust 2011, financially, and to have an even more fruitful 2011 for our mission and witness in the world.

Blessings,

A handwritten signature in black ink that reads "Nick Anderson".



Union Theological Seminary alumni, students and staff at the Faithful Servant Event

## Presbyterian Welcome Events and Projects

### Renovation Party

We've moved! Outgrowing our old space in the office of the ever-gracious Rutgers Presbyterian Church, we have moved around the corner to the Broadway side of the building. On March 17, we held a successful renovation party in the new space before construction began to raise funds for the move.

### Pub Night at Union

Presbyterian Welcome joined Auburn Theological Seminary to host a Pub Night at Union Theological Seminary on June 6. It was a great opportunity to showcase all that the two Presbyterian organizations are doing to support Presbyterian students at the seminary and to get to know some of the students. Rev. Mary Speers made "Communion Tokens" and we sold "Indulgences," just to poke a little fun at our Reformed selves. Students Jami Yandle, Hannah McIntyre, and Blair Moorhead took care of the bar and were extraordinary Presbyterians that evening!



Students at Pub Night

### 219th Presbyterian Church (U.S.A.) General Assembly

In 2009 Presbyterian Welcome drafted an overture to change G-6.0106b that was sent to the General Assembly by the Presbytery of New York City. In addition several other Presbyterian Welcome Supporting Congregations sent overtures to the Assembly to strike G-6.0106b and to request the definition of marriage change from "a man and a woman" to "two people." Presbyterian Welcome's leadership was felt at the Assembly as Revs. Mieke Vandersall, Mary Speers, Ray Bagnuolo and Chris Shelton served as Overture Advocates for these various efforts. The Assembly did indeed pass an overture to change G-6.0106b (although not the one we wrote), and the Marriage Committee overwhelmingly passed the overture we brought to it, although the plenary of the Assembly did not pass it on to the

presbyteries for ratification. In 2010 and 2011, mostly through social networking, we are working toward the ratification of what is known as the "10-A Campaign," to change G-6.0106b.

### Heritage of Pride March

On July 25 we marched in 2010's Heritage of Pride March in New York City with more than 30 Presbyterian Welcome participants throughout the day. We continued with the very successful theme from the previous year, "Flaming for Christ!" We wore red, glammed it up in red beads and shirts, and handed out "Flaming for Christ" buttons and atomic fireball candies along the route. We proudly carried our banner, hand-made flames and doves, and other signs, which the crowd loved. It was great fun, and an incredible witness to the LGBTQ community!

### GLBT "Under Care" Inquirers and Candidates Retreat

This year's retreat was an amazing success, taking place again in rural Indiana from July 15-18. There were 18 LGBTQ Inquirers and Candidates from around the country who were joined by specially invited guests, Tricia Dykers-Koenig from The Covenant Network of Presbyterians; Janet Edwards from More Light Presbyterians; and Carolina Treviño, Presbyterian Welcome's former intern. It is the sixth retreat in as many years, and it is profound to sit back and reflect on the growth of the individuals that we have collectively nurtured through the years of the retreat and to see the strong community that has formed.

### Worship

This year we hosted a worship service on July 28 at First Presbyterian Church in the City of New York to reflect on and celebrate our summer at General Assembly, the Pride March and organizing the LGBTQ Inquirers and Candidates Retreat. Mieke Vandersall delivered an inspiring sermon and Derrick



McQueen, Meagan Manas, Paul Mowry and Takako Terino all participated in liturgical planning and leadership.

### Strategic Planning Sessions & New Structure

This year two strategic planning sessions were held to discern the future of Presbyterian Welcome. The result is a goal of creating a new worshipping community of welcome that would embody the vision we have long shared—a world as inclusive as God's grace, and a church where God's call to service is affirmed in all persons.

On an organizational level, we realigned our governing structure. Beginning in late 2010, the Board of Directors is now composed of two sub-bodies: the Trustees are empowered to oversee the financial needs of the organization, and the Visionaries organize primarily to support the Minister Director in discerning the Spirit's lead for Presbyterian Welcome and its programs. We are excited about this new direction and believe it will better serve the organization. The Rev. Chris Shelton will continue as our President.

### Christmas Party

We are once again very grateful to Rev. Alistair Drummond for graciously opening his home on December 12 for our annual Christmas party. We had a great crowd and an abundance of wonderful food and drink. It was a wonderful opportunity to thank Presbyterian Welcome friends for all they have contributed during the year while relaxing with each other and enjoying the busy holiday season.



## Evangelism and Outreach

**1/3** Mieke preaches at Summit Presbyterian Church in Philadelphia, where Cheryl Pynch serves as pastor

**1/10** Mieke preaches and officiates communion at St. James Presbyterian Church

**1/23** Mieke participates in the 25th anniversary of the ordination of Mary Speers

**1/24** Mieke participates in the installation of Andrew Stehlik at Rutgers Presbyterian Church

**2/14** Mieke worships at First Presbyterian Church of Brooklyn

**2/17** Mieke participates in the Upper West Side Ash Wednesday Service

**3/7** Mieke preaches and officiates communion at St. James Presbyterian Church

**3/29** Mieke preaches at Bethel United Presbyterian Reformed Church

**4/2** Mieke preaches for Good Friday services at Lafayette Avenue Presbyterian Church and Rutgers Presbyterian Church

**4/11** Mieke attends Watchung Avenue Presbyterian Church and speaks with the Session about the mission of Presbyterian Welcome

**4/25** Mieke participates in the ordination of Kellie Anderson-Picallo and presents symbols for ministry

**4/29** Presbyterian Welcome and Auburn Theological Seminary sponsor Pub Night at Union Theological Seminary

**5/9** Mieke teaches Adult Education at Brick Church and attends worship

**5/22** Mieke leads a retreat for Whitestone Presbyterian Church

**6/6** Mieke preaches and officiates communion at St. James Presbyterian Church

**6/26** GLBTQ Inquirers and Candidates Retreat Participants lead adult education at First Presbyterian Church in the City of New York and then attend PRIDE

**7/2-10** General Assembly

**7/11** Mieke attends Bethel Presbyterian Church dedication service

**7/14-18** GLBTQ Under Care Inquirers and Candidates Retreat

**7/28** End of summer worship event at First Presbyterian Church in the City of New York

**8/15** Mieke preaches at Broadway Presbyterian Church

**9/12** Mieke and Jami work with Presbyterian Promise on social networking

**10/3** Mieke preaches and officiates communion at St. James Presbyterian Church

**10/24** Tricia Dykers-Koenig preaches at Rutgers Presbyterian Church

**10/25** Tricia and Mieke have lunch with students at Union Theological Seminary

**10/26** Tricia and Mieke hold an outreach meeting in Lackawanna Presbytery

**10/31** Mieke preaches at First Presbyterian Church in Passaic, NJ

**11/7** Mieke preaches and officiates Communion at St. James Presbyterian Church

**11/21** Mieke preaches at First Presbyterian Church, Whitestone, Queens

**12/5** Mieke preaches and officiates Communion at Church of the Gethsemane in Brooklyn

**12/12** Mieke preaches at Good Shepherd-Faith Presbyterian Church

In addition, Mieke chaired the Administrative Commission for Ft. Hamilton Presbyterian Church and served as the Moderator of Session for brief times at Church of the Gethsemane and First Presbyterian Church of Brooklyn. She also concluded her service as Chair of the Committee on Preparation for Ministry.

## Yes, I want to join the Presbyterian Welcome community:

**Friend (\$35-99)**

You will receive a newsletter, will be updated on all events, be added to our news alert list serve, and be invited to our annual Christmas party.

**Best Friend (\$100-249)**

You receive all the benefits of Friends with the addition of a tin of Presbyterian Welcome mints.

**Special Friend (\$250-999)**

You receive all the benefits of Best Friends with the addition of a Presbyterian Welcome t-shirt.

**Friends Forever (\$1,000+)**

You receive all the benefits above with the addition of a ceramic fish dish...and much more!

**Other:**

I am a student or am on a budgeted income but still want to be a Friend. I am contributing \$ \_\_\_\_\_ to the cause. Please sign me up as a supporter!

I am sending \$ \_\_\_\_\_ right now and pledge to send \$ \_\_\_\_\_ by the end of the year.

All donations are tax deductible. (please see other side)

## Publications and Media

### Newsletters

This year we created only a winter newsletter. It went out to nearly 1,300 recipients and an electronic version was emailed. We could not have done it without our faithful volunteers. Thanks for your help! We have since moved to a completely electronic format to communicate with our constituency more regularly and to save trees and money.

### Internet Presence

We continue to have a strong presence on the internet. Our blog Psalms Modern had more than 50 contributors this year. We have been tremendously blessed by an explosion of our presence on Facebook and Twitter. We have 1,250 friends on Facebook and are increasing our Twitter presence. The use of social network was especially helpful during the General Assembly when followers and friends were kept up to speed on actions of the Assembly.

## Financial Development

The financial realities of the past few years have hit us hard in 2010. As you can see in our financial report, we did not break even, but due to careful planning over the past many years we were able to save enough to get us through the difficulty of seeking funding in 2010.

### Faithful Servant Awards

This year we held a tremendously successful event to honor Elder Helen Bowen-Ingram and the Rev. Barbara Lundblad for their continued commitment to the Presbyterian LGBTQ community. An elegant reception was held at Fifth Avenue Presbyterian Church on Monday, November 8 at 7pm. More than 75 people attended and a great time was had by all. Items donated for the silent auction included voice and guitar lessons, a kayak trip, a hand-made crocheted scarf, a New York City Piano Bar tour, a hand-made quilt, a

Guided Light Sanctuary kit and several beautiful paintings and photographs.

### Foundation Support

Again we are tremendously grateful for a significant gift from the **E. Rhodes and Leona B. Carpenter Foundation**. It is such an honor to be trusted and supported by this foundation. This year they agreed to help fund our Outreach Projects and the LGBTQ Inquirers and Candidates Retreat.

In addition, the **Mark D. Hostetter and Alexander N. Habib Foundation** continues to support us with consistent and active affirmation of our work.

We couldn't be more grateful to count ourselves as one of the grantees from the **Presbytery of New York City's Council on Witness to Society and the World Grant Program**.

### Connect with us online:

#### Website:

[www.presbyterianwelcome.org](http://www.presbyterianwelcome.org)

#### Facebook:

[www.facebook.org/presbyterianwelcome](http://www.facebook.org/presbyterianwelcome)

#### Devotional blog:

[www.presweldevotional.blogspot.com/](http://www.presweldevotional.blogspot.com/)

**To join our mailing list, email list, or become a blog writer, email:** [presbyterianwelcome@gmail.com](mailto:presbyterianwelcome@gmail.com)



Name \_\_\_\_\_

Address, City, State, Zip \_\_\_\_\_

e-mail address \_\_\_\_\_

Phone number \_\_\_\_\_

Your name and mailing address will be used to send invitations to our events to those in the tri-state area, and to send you our newsletter if you do not wish to receive it electronically.

Your e-mail address will be used to send occasional updates and opportunities to participate in the Presbyterian Welcome community. It will not be shared with third-parties.

- Please send my newsletter electronically
- Please list me as an anonymous donor.

Presbyterian  
Welcome

2095 Broadway, Suite 308  
New York, NY 10023  
t: 917.441.8638 • f: 212.721.9154  
[info@presbyterianwelcome.org](mailto:info@presbyterianwelcome.org)  
[www.presbyterianwelcome.org](http://www.presbyterianwelcome.org)

## Financial Report

<b>Income:</b>	<b>January – December 2010</b>	<b>Budget</b>
Savings Income		
Member Churches	25,250.03	25,675.00
Grants	47,900.00	85,000.00
Candidates Retreat Income	11,395.48	13,000.00
Other Income	426.18	704.50
Friend	2,360.57	2,500.00
Best Friend	3,743.05	4,000.00
Special Friend	6,423.70	12,000.00
Friends Forever	14,337.29	29,000.00
Other Friend	124.26	200.00
Faithful Servant	9,908.55	0.00
<b>Total Income</b>	<b>121,869.11</b>	<b>172,079.50</b>

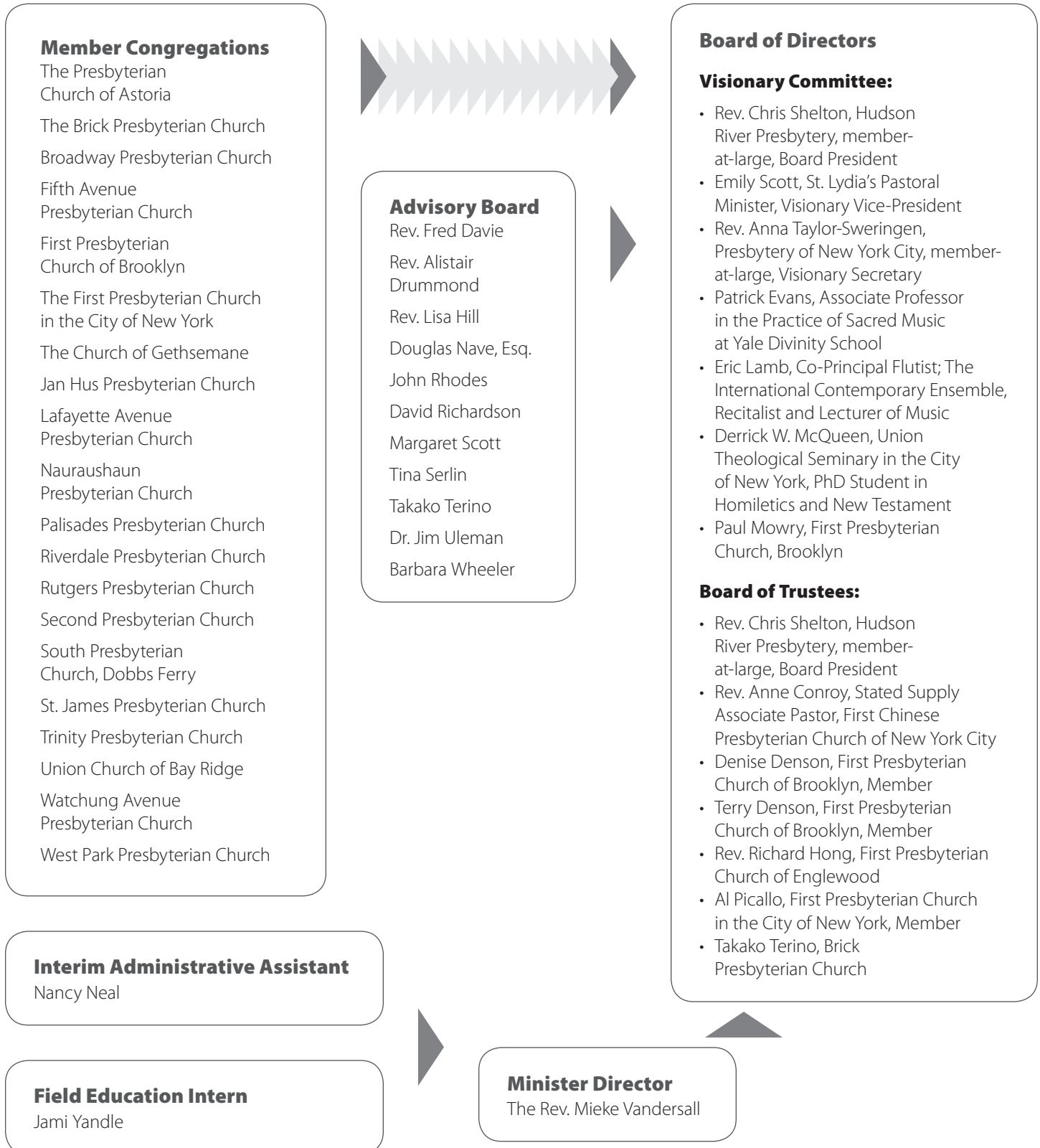
<b>Expense:</b>	<b>January – December 2010</b>	<b>Budget</b>
Personnel	108,334.85	119,176.80
Independent Contractor Fees	5,908.04	5,650.00
Communication	5,721.54	4,450.00
Candidates Retreat Expense	10,316.96	12,500.00
Printing	1,016.61	2,500.00
Supplies	1,224.38	1,750.00
Conferences and Meetings	2,258.29	3,500.00
Transportation	2,481.60	3,500.00
Fundraising	1,325.53	0.00
Advertising	252.00	0.00
Pride	1,475.09	1,500.00
Equipment	1,069.27	250.00
Liability Insurance	916.01	0.00
Other Expenses (Mostly Moving Expenses)	10,320.41	17,302.70
<b>Total Expense</b>	<b>152,657.35</b>	<b>172,079.50</b>

<b>Net Income</b>	<b>-30,788.24</b>	<b>0.00</b>
-------------------	-------------------	-------------

## Personnel

This year we said goodbye to Meagan Manas, our communications director. She has moved on to work full time with the National Council of Churches. For the interim period, Erin Reese served as the communications director and Douglass Anne Cartwright served as the administrative assistant. When their terms expired, we hired Jami Yandle as a field education intern from Union Theological Seminary. She handles the communications work and Nancy Neal maintains our administrative work.

## Presbyterian Welcome Organizational Chart



**Friends (\$35-99)**

Sorrel Ann Alburger  
 Paule Alexander  
 Dorothy Alexander-Gill  
 Melanie Baez  
 Leigh Behnke  
 Catherine Bennett  
 Mary Birchard  
 Cara Bissell  
 Scott Black-Johnson  
 Anne Connor  
 Adele Crawford  
 William Critzman  
 Laura Cunningham  
 Velma Deselby-Bowen  
 Bill Falk  
 Arthur Fullerton  
 Debra Haffner  
 Carolan Hart  
 Dorothy Hibbert  
 Alice Hudson  
 Nadine Hundertmark  
 Barbara Ivy  
 Nathaniel Jacobson  
 James Johnson  
 Theresa Johnson  
 Charles Jones  
 Lavendar Kelley  
 Anna Lee  
 Pauline Levin  
 Patricia Lewis  
 Derrick McQueen  
 Dorothy Muller  
 Marcia Perry  
 Tara Ragbir  
 Harriet Ray

David Richardson  
 David Shulte  
 Ellsworth Stanton  
 Norman and Susan Stanton  
 April Swofford  
 Liz Theoharis  
 Paul Vasile  
 Ricardo Vazquez  
 John Waanders  
 John David Warren

**Best Friends (\$100-249)**

Dick and Sandy Beery  
 Betty Bolden  
 Robert Brashear  
 Betsy Britton  
 Vivian Bryant  
 Bill and Stuart Buice  
 Kate Dunn  
 William Falk  
 Bryan Franzen  
 Liv Hansen  
 Richard Hong  
 Sevilla Hughes  
 Andy James  
 Kevin Jennings  
 Nicole Johnson  
 Serene Jones  
 Betty Jones  
 Charles and Estelle Jones  
 Marie Kalson  
 Kurt Kaboth and Katherine  
 Cunningham  
 Anthony Ridley and Kathryn  
 Graybill  
 Amy Lopez-Cepero  
 Massimo Maglione

Christopher Morse  
 Holly and Jim Nedelka  
 Kevin O'Brien  
 Ellen Pearre-Cason  
 Thomas Philipp  
 Cheryl Pynch  
 Mary Reiman  
 Richard Spalding  
 Marcy Steele  
 Ondrej Stehlik  
 Terril Stumpf  
 Shannan and Juan Vance-  
 Ocampo  
 Anne Waasdorp  
 Bill Weisenbach  
 Nan Wilson  
 Su Yon Pak

**Special Friends (\$250-999)**

John Bradley  
 Richard Burlage  
 Dave Taylor and Cliff Flanders  
 Tony DeLaRosa  
 Alistair Drummond  
 Krystin Granberg  
 John Harris  
 Karen Kavey  
 Joan and Frank Marino  
 Suzanne Mecs  
 Richard and Georgia Pease  
 Debra Peevey  
 Anna Pickney-Straight  
 Reade and Joan Ryan  
 Byron and Margaret Shafer  
 Chris Shelton

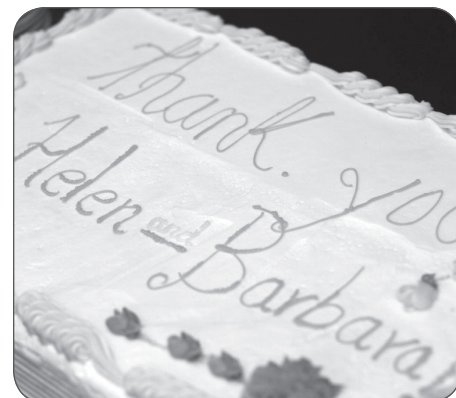
Anna Taylor-Sweringen  
 Jim Uleman  
 Mieke Vandersall  
 Jon Walton  
 Karen Zvonik  
 Vicki

**Friends Forever (\$1,000 and up)**

Albert and Kellie Anderson-  
 Picallo  
 David Cockcroft  
 Anne and Fran Conroy  
 David DeLauro  
 John Kinney  
 Laurie McNeill  
 Douglas Nave  
 Julian and Ruth Schroeder  
 Takako Terino  
 Duane and Myrle Wall

**Other Friend**

Steven Andrews  
 Elizabeth Bukey  
 Paula Couch  
 Oyvind Hansen  
 Kierstin Homblette  
 Peggy Howland  
 Donna Hunter  
 Meghan Martinieri  
 Alex and Amanda Miller  
 Blair Moorhead  
 Paul Mowry  
 Rosemarie Napoli  
 Barbara Lea Rice  
 Suzanne Ujvagi



## Vision

As followers of Christ, convinced by Scripture and the Reformed tradition, we envision a world as inclusive as God's grace and a church where God's call to service is affirmed in all persons.

## Mission

Presbyterian Welcome, a validated ministry, is a community of congregations and individuals in the New York area. Our mission is to build up and repair the Body of Christ by working for the full inclusion of all disciples, without regard to sexual orientation and gender identity. In being a resource for the church we aim to:

- Provide leadership and education for the exploration of human sexuality in a theological framework;
- Reform the Church constitution to remove barriers to inclusion;
- Raise awareness, encourage discipleship and promote welcome in local congregations;
- Witness to God's faithfulness for those who face difficulty in responding to God's call;
- Join in partnerships with like-minded organizations to accomplish these goals.

## Member Congregations

The Presbyterian Church of Astoria  
The Brick Presbyterian Church  
Broadway Presbyterian Church  
Fifth Avenue Presbyterian Church  
First Presbyterian Church of Brooklyn  
The First Presbyterian Church in the City of New York  
The Church of Gethsemane  
Jan Hus Presbyterian Church  
Lafayette Avenue Presbyterian Church  
Nauraushaun Presbyterian Church  
Palisades Presbyterian Church  
Riverdale Presbyterian Church  
Rutgers Presbyterian Church  
Second Presbyterian Church  
South Presbyterian Church, Dobbs Ferry  
St. James Presbyterian Church  
Trinity Presbyterian Church  
Union Church of Bay Ridge  
Watchung Avenue Presbyterian Church  
West Park Presbyterian Church

# Presbyterian Welcome



2095 Broadway, Suite 308

New York, NY 10023

T: 917.441.8638

[info@presbyterianwelcome.org](mailto:info@presbyterianwelcome.org)

[www.presbyterianwelcome.org](http://www.presbyterianwelcome.org)

[www.facebook.com/  
presbyterianwelcome](http://www.facebook.com/presbyterianwelcome)